



te'tuxwtun

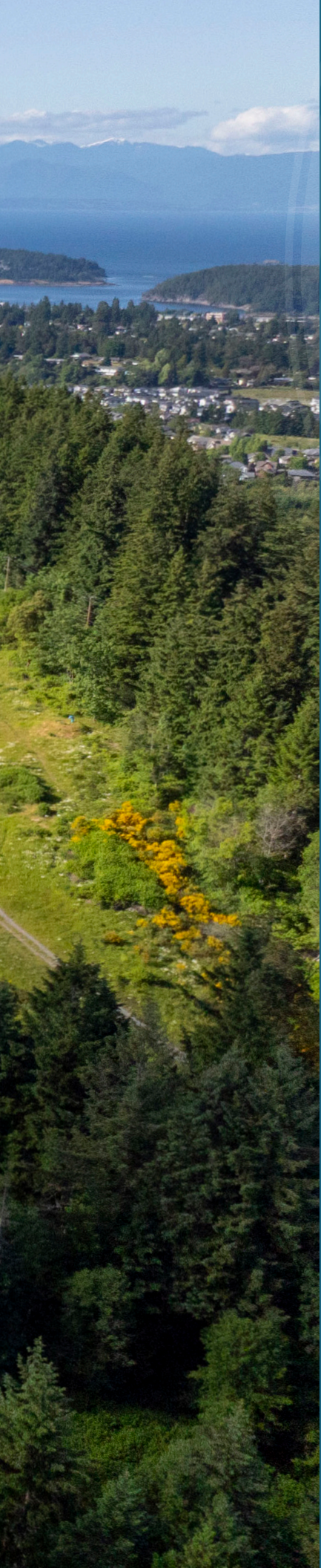
Plan to **VOTE** May 9, 2026

Your vote helps shape the future of our Nation

Book 6 of 6  
March 20, 2026

At this time, all information is accurate





# Overview

**This booklet shares information about te'tuxwtun lands**

Share your feedback	5
hul'q'umi'num' language	6
Quote from: Jerry Brown, Former Chief and Snuneymuxw Elder	7
Voting for the future of te'tuxwtun	8
Land parcel information	10
The history of te'tuxwtun	14

The background of the page is a close-up photograph of wood grain, showing various textures and colors from light tan to dark brown. The wood grain runs vertically and diagonally across the frame.

hay cep qa' for taking the time  
to learn more about

# te'tuxwtun

**Your voice and your vote matters.**

Help turn our shared vision for the future into reality. We need your heart and mind to help shape what's ahead for our Nation.

As we prepare for the  
te'tuxwtun vote, we invite you to  
scan the QR code or visit  
**[www.snuneymuxw.ca/cp](http://www.snuneymuxw.ca/cp)** to:

Share your feedback on the future  
of the te'tuxwtun land parcel

Take a virtual tour of our  
te'tuxwtun lands

Stay up to date with voting  
information and key dates

And more!



## **hul'q'umi'num'**

Throughout this booklet, we have included Snuneymuxw hul'q'umi'num' including the words listed below. Our language connects us to the wisdom and knowledge of our Ancestors.

### **hay cep qa'**

Thank you

Said to more than one person

### **hay ch qa'**

Thank you

Said to one person

### **te'tuxwtun**

Grandmother of all surrounding mountains



“From the beginning of time, our mountain has provided materials for our canoes, food and our medicines. The Ancestors, including my parents and grandparents, have always lived with these sacred resources in a delicate, humble, reciprocal relationship.

The mountain realm is known to be a place of significant spiritual power. In the stillness of the mountain, I found time for quiet reflection and prayers, finding a path to a deeper understanding of self and spirit.

This is one of the rituals that have helped me understand the importance of respect and kindness. This is how I have come to know our lands, and to grow with the spirit of our lands as our teacher.”

— Jerry Brown  
Former Chief and Snuneymuxw Elder

# Voting for the future of te'tuxwtun

**The te'tuxwtun project is a profound moment for Snuneymuxw.**

After three years of member feedback, this vote asks members if they are in favour of designating 102.7 acres of land on the te'tuxwtun reserve for leasing for the following uses:

- **Residential**
- **Commercial**
- **Institutional**
- **Light industrial**
- **Recreational/park**
- **A mix of these uses**

Every dollar received as a profit from this project will be audited and goes directly back to our Nation. 100% of funds from this project will benefit Snuneymuxw, our priorities and our members.



If the majority of members vote no to our community's plan for mixed-use, this huge economic opportunity for our Nation will be put on hold.

Your participation and vote ensures that Snuneymuxw snawaylth and member voices are at the forefront of this exciting new development. You honour our Ancestors, the big work of our community and help us plan for the future together.

The land highlighted in **luluć** (yellow) represent the 102.6-acres to be voted on in the near future. Plans for the remainder of te'tuxwtun will be decided in a future vote.

For this area, we've heard from members that there's interest in creating an entertainment district. We hope to create a space that brings families together, offers gathering places and serves as a destination that celebrates and honours Snuneymuxw.



Based on member feedback, we plan to develop this land as mixed-use development including residential, retail, and community amenities.

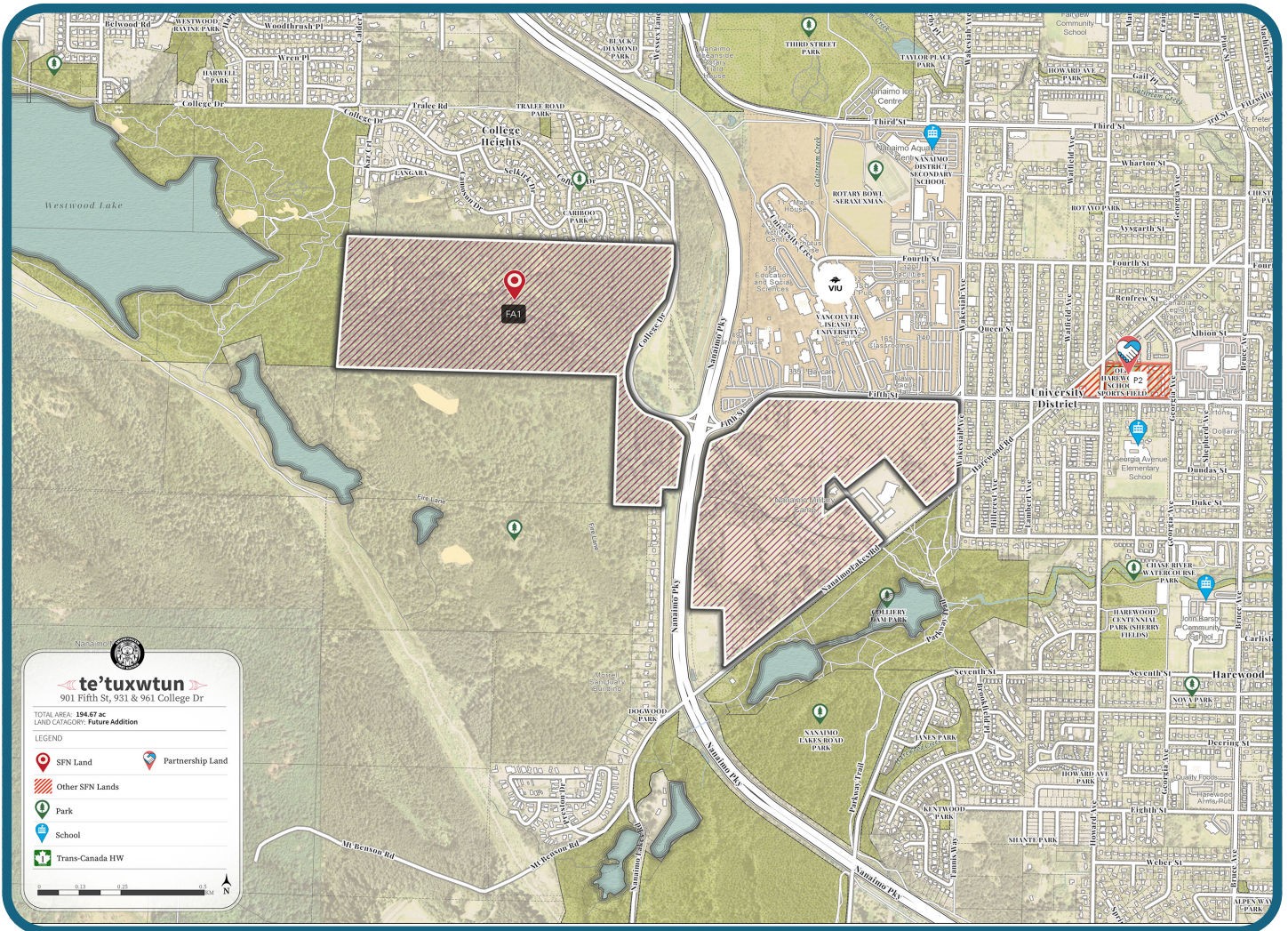


# te'tuxwtun

**PARCEL SIZE: 194.67 acres**   **OWNERSHIP TYPE: Addition to Reserve**

## SITE INFORMATION

Located at the base of te'tuxwtun and adjacent to Vancouver Island University, this site overlooks the city of Nanaimo and the Salish Sea. The land has varying degrees of slope. The upper parcel has a steep slope and dense forests, while the lower parcel is a mix of open spaces and forested areas.





FORMER INDIAN HOSPITAL SITE



NORTH VIEW ALONG PARKWAY



FIFTH AND WAKESIAH



## te'tuxwtun

**PARCEL SIZE: 194.67 acres** **OWNERSHIP TYPE: Addition to Reserve**

### OPPORTUNITIES

- Proximity to Vancouver Island University and NDSS, with potential to serve students and professionals.
- Well connected through transportation routes, along the highway.
- Expansion of residential neighbourhoods with proximity to Colliery Dam Park and Nanaimo Aquatic and Ice Centre. Low, medium and high density residential opportunities have been identified as a priority by the community.
- Existing natural environment, mature **thuthíqut** (trees) and seasonal stream, with a beautiful view toward the Salish Sea, the coast mountains and the mainland.
- Operating businesses and developing on reserve land offers tax benefits and more flexible development options.

### CONSTRAINTS

- Seasonal stream located in the central part of the lower parcel.
- Steep slopes and dense forest are present in various portions of the site.
- Impact of previous developments (Indian hospital, DND development, septic field).
- Noise pollution from highway traffic at certain locations.

### COMMUNITY FEEDBACK TO DATE

- Including a monument or other element that recognizes and educates about the history and impact of the Indian hospital.
- Interest in mixed-use development that provides economic opportunity for SFN members.
- Interest in including a daycare, detox centre and entrepreneurial opportunities for members.
- Interest in having access to harvest medicinal plants and **sthumum** (berries).



NORTHEAST VIEW FROM PARKWAY



TOP OF LOWER PARCEL



LOOKING WEST TOWARDS PARKWAY

# The history of te'tuxwtun

In 2024, this Land was part of a historic land reconciliation agreement that saw it returned to Snuneymuxw as part of an 80.09-hectare addition to our reserve lands.

“In 2009, my late mother, Chief Viola Wyse, was at the negotiating table alongside Counsellor William Yoachim and the late Dave Mannix. The government at that time was firm in its position: the former DND lands would never become additions to reserve land. Today, Snuneymuxw Council is honoured to finalize these additions to reserve land as a tribute to our Ancestors and as a commitment to serving our future generations. The path of reconciliation we are walking alongside Crown-Indigenous Relations has proven to be a positive way forward for our people and all connected to this sacred territory. Today is a profound step in a journey that will continue to see more milestones like this one. This is our legacy and our responsibility.”

— Chief Mike Wyse

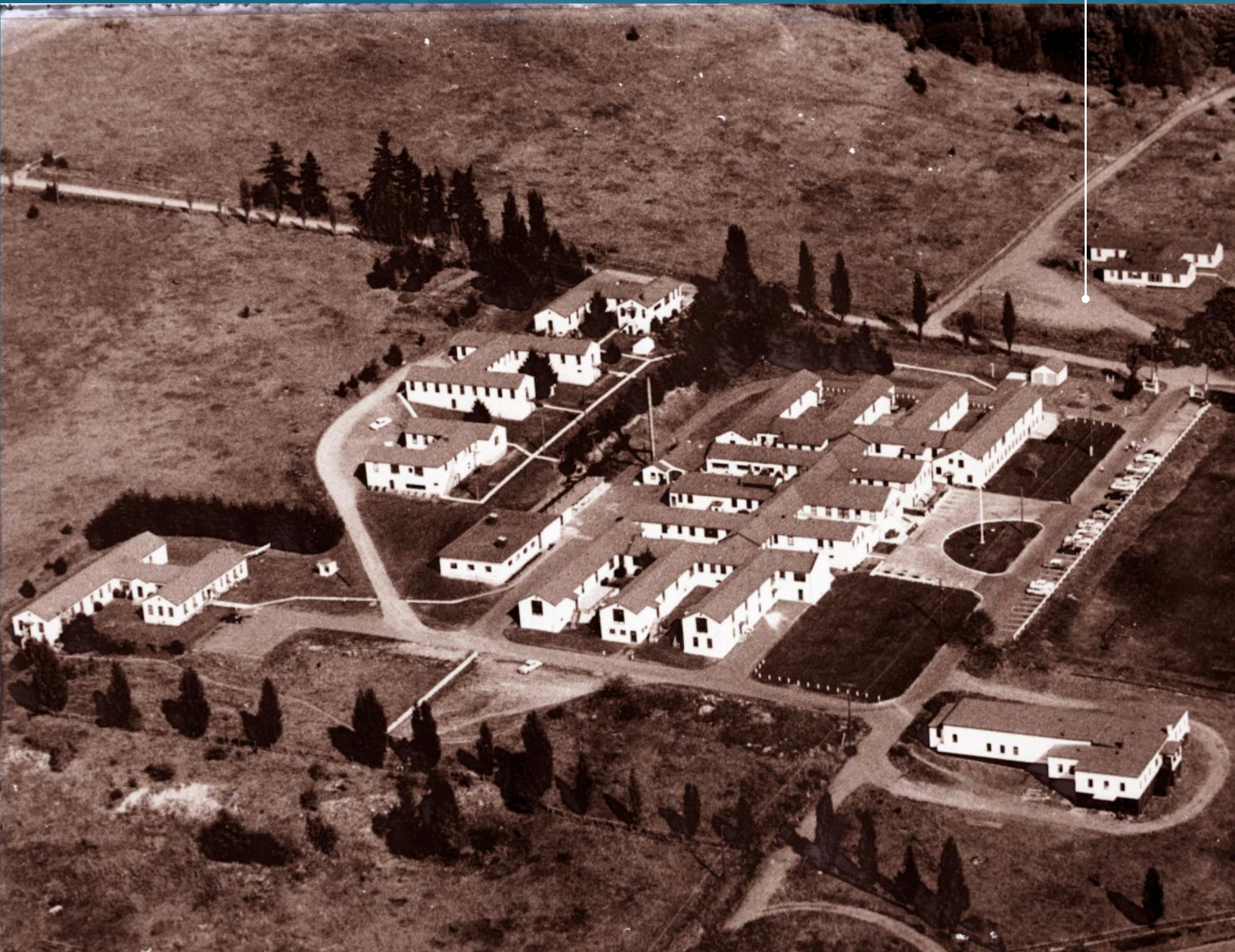


These lands have supported our Snuneymuxw people since the beginning of time.

This te'tuxwtun land was taken away from Snuneymuxw by the government in the mid 1800s.

It was used by Western Forest Products and the Department of National Defence, before becoming the site of the Nanaimo Indian Hospital from 1946-1967.

Historical photo of  
Camp Nanaimo and the  
Nanaimo Indian Hospital





These te'tuxwtun lands, at one time known as Camp Nanaimo, have supported our Snuneymuxw people since the beginning of time. Over the past three years, member feedback has helped shape plans for a portion of these lands.



On **May 9, 2026**, we are asking our members to vote “yes” to mixed-use (mix of housing, recreational, commercial and more) on te'tuxwtun, based on member feedback.

## Your voice matters.

Every dollar received as a profit from this project will be audited and goes directly back to our Nation. 100% of funds from this project will benefit Snuneymuxw, our priorities and our members.

We'd love to hear your ideas and suggestions for these sites. Your voice matters as we plan for the future of our Nation.

Visit [www.snuneymuxw.ca/cp](http://www.snuneymuxw.ca/cp)

### Stay in touch

**Email:** [landsclerk@snuneymuxw.ca](mailto:landsclerk@snuneymuxw.ca)

**Call:** 250-740-2300

**Write to:** ATTN: Lands Team  
668 Centre St., Nanaimo, B.C. V9R 4Z4